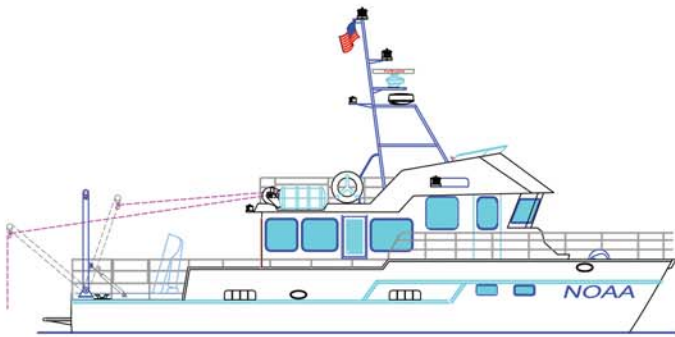


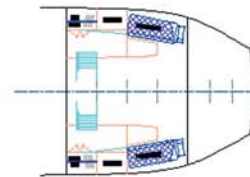
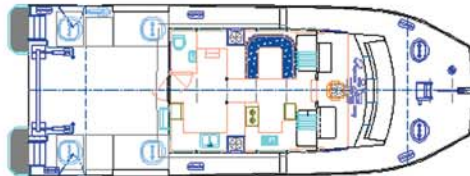
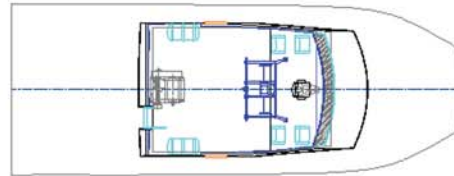


# NOAA 48'

The Next Generation in Catamaran Design



The 48' research vessel will operate in the Stellwagen Bank National Marine Sanctuary.



## SPECIFICATIONS

|                |                           |
|----------------|---------------------------|
| Length         | 48'                       |
| Beam           | 18' 6"                    |
| Draft          | 4' 8"                     |
| Passengers     | N/A                       |
| Engines        | Twin Cummins QSC8.3M490   |
| Rating         | 484 hp / 2500 rpm         |
| Fuel Capacity  | 600 gal                   |
| Propulsion     | Osborne Props.            |
| Speed          | 24 kn.                    |
| Construction   | Aluminum - Marine Grade   |
| Builder        | All American Marine, Inc. |
| Designer       | Teknicraft Design Ltd.    |
| Launched       | Spring 2006               |
| Classification | N/A                       |

www.allamericanmarine.com

The new 48' research vessel is a shorter version of the R/V Shearwater, the Channel Islands National Marine Sanctuary's state-of-the-art research catamaran. The new vessel will serve as an important new tool to enhance research and monitoring in the Stellwagen Bank National Marine Sanctuary. In addition to this role, the vessel will assist as an additional emergency response asset and will assist with on-the-water enforcement.

The vessel is being designed from the bottom up, built specifically to further on-going sanctuary management, research, education, and enforcement programs. The catamaran provides a stable, fast, roomy design ideal for short-duration trips out to the sanctuary, 20 miles offshore of Scituate, MA. The vessel will be an important asset to the sanctuary program and to the larger community, enabling sanctuary staff and collaborating institutions to conduct focused research, surveillance, and enforcement.

For more information, contact:

**All American Marine**

200 Harris Avenue

Bellingham, Washington 98225

Ph. 360.647.7602

Fx. 360.647.7607

Email: sales@allamericanmarine.com



CatFacts